

## ADVANCED SAFETY SYSTEMS

FOR PEACE OF MIND, MILE AFTER MILE

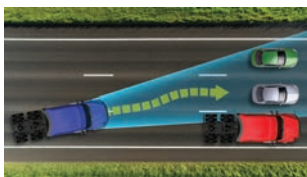
The Detroit Assurance Suite of Safety Systems with Active Brake Assist 6 features a number of updates to help keep your business running smoothly.

### DETROIT ASSURANCE SUITE OF SAFETY SYSTEMS

Experience advanced safety systems that prioritize road safety like never before, available exclusively on the Fifth Generation Freightliner Cascadia<sup>®</sup>. Using state-of-the-art fused camera and radar technology, the truck's surroundings are monitored up to 270 degrees, tracking vehicles, bicycles, and pedestrians more than 14 times per second. With Detroit Assurance, focus on delivering on time with confidence.

#### ACTIVE BRAKE ASSIST 6 (ABA6)

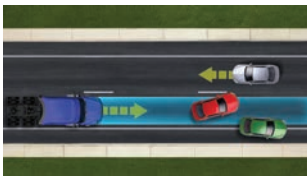
Enhanced automatic emergency braking now provides collision mitigation in more scenarios.



ABA6 can now detect vehicles in adjacent lanes. ABA6 allows the truck to respond if the driver swerves into those lanes at the last moment to avoid a collision in their current lane.



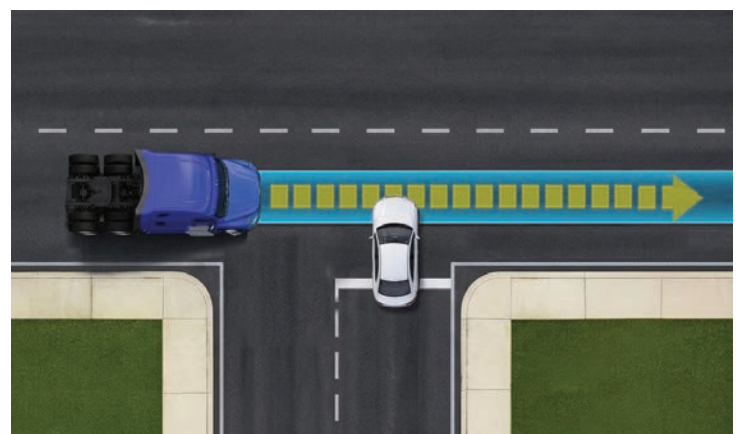
ABA6's expanded field of detection allows the system to detect visible vehicles in curves and issue warnings or automated emergency braking on them.



ABA6 now has the capability to recognize and respond to offset vehicles and those positioned at an angle, which is commonly seen in situations following an accident ahead.

#### CROSS TRAFFIC ASSIST

Designed to identify and track crossing vehicles, Cross Traffic Assist delivers added support at intersections by providing either partial or full braking — depending on likelihood of impact — when a vehicle is crossing the truck's path from either the passenger or driver side.



## ADDITIONAL FEATURES

### SIDE GUARD ALERT 2

Detects vehicles, pedestrians, and bicyclists on both the driver and passenger sides of the truck, including within blind-spot areas.

- Delivers visual and audible alerts when potential collision risk is detected involving moving or stationary objects.
- Increases driver awareness and overall safety by helping prevent side-impact and blind spot-related incidents.

### ACTIVE SIDE GUARD ASSIST 2

Engineered to bring greater confidence to every turn, Active Side Guard Assist 2 provides active braking on both left- and right-hand turns.

- Braking on left-hand turns: monitors oncoming traffic to identify potential collision risks when a signaled left-hand turn is attempted, issuing visual and audio alerts before engaging braking.
- Braking on right-hand turns: monitors pedestrians and cyclists on the passenger side blind spot and brakes if a turn is attempted, issuing visual and audio alerts before engaging in partial or full braking.

### ACTIVE LANE ASSIST 2

Using the advanced sensor suite from Active Brake Assist, coupled with a motor placed in the steering column, Active Lane Assist provides reliable steering support to drivers.

- Lane Change Assist uses side radar technology to monitor blind spots, actively steering the truck back if a lane change is initiated into an occupied lane, even if the turn signal indicator is engaged.
- Lane Keep Assist with Attentive Driver Protection reads lane markings to keep the truck centered in its lane while in cruise control. If a driver does not engage with the steering wheel after a number of audible and visual alerts, the truck will slow to a stop and engage hazard lights to alert of a possible emergency situation, all while keeping the truck centered in its lane.
- Lane Departure Protection reads lane markings to help steer the Cascadia back into its lane if it begins to veer out.



### ADAPTIVE CRUISE CONTROL TO 0 MPH\*

Automatically adjusts cruising speed to help maintain a safe following distance from traffic ahead. When equipped with a Detroit engine and transmission, it can operate down to 0 MPH, including in stop-and-go traffic.

### ACTIVE SPEED INTERVENTION

Helps drivers remain within the speed limit and adopt safe driving habits by issuing a passive alert when a driver starts to speed. Alerts are followed by active warning, de-throttling, or adaptive cruise control adjustment, if necessary.

### BRAKE HOLD MODE

When activated, allows the vehicle to remain stopped while the driver has their foot off the brake pedal when they're waiting in traffic or at a loading dock.

### INTELLIGENT HIGH BEAM

Automatically switches headlights from high to low beams when urban light or another vehicle's headlights or taillights are detected. Once the vehicle or city lights are out of sight, high beams switch back on.

### AUTOMATIC WIPERS & HEADLAMPS

Turns wipers and headlights on or off to match weather and lighting conditions.

### TAILGATE WARNING

Issues audible and visual alerts when the truck's following distance is too short in relation to its speed for 10 seconds or longer.

### TRAFFIC SIGN DISPLAY

Reads speed limit and other traffic signs and displays relevant sign information in the instrument cluster.

*\*For vehicles with third-party powertrains, it can operate down to 10 MPH*

*Detroit Assurance safety systems, including ABA6 and related features, are designed to help mitigate certain collision scenarios through driver alerts and targeted system responses, not to replace driver judgement or responsibility.*